



Targets
Limits
Geolocation
Hierarchy
Alerts
Ownership

Thousands of sources available!



Read Data in Real-Time

Leave your data where it makes sense and read it in real-time, no matter how many sources.

Simplify by Adding Context

Transform raw data into intuitive KPIs everyone can understand and compare, with no coding.

Visualize & Personalize

At-a-glance results, regardless of location or device. Personalized and role-based dashboards.

Notifications Tell You When to Look

Visual KPI notifies you when things go wrong and can escalate if things get worse.

Customers

Founded in 2005

100s of installations

10,000+ users globally

Focus on operationally intensive industries

- Energy
- Oil & Gas
- Telecommunications
- Mining
- Manufacturing

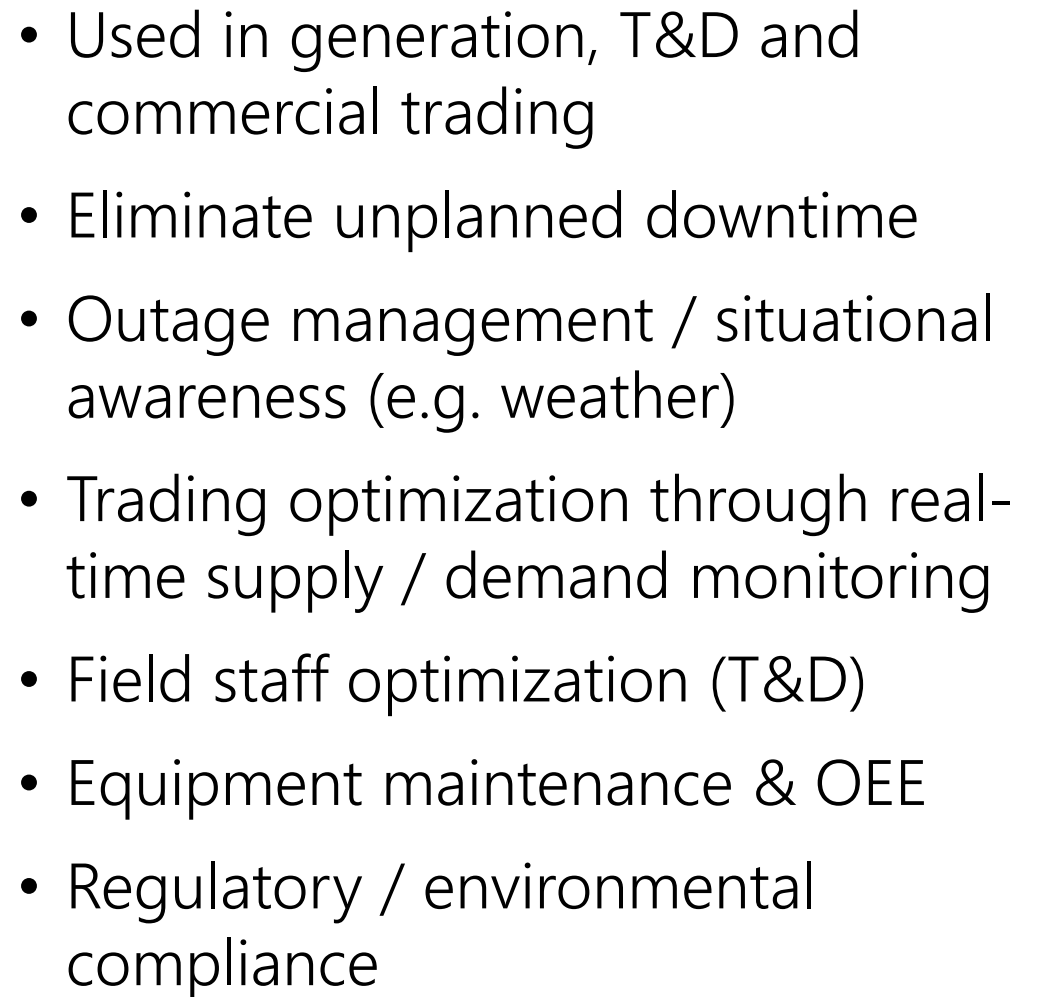


Customer Benefits

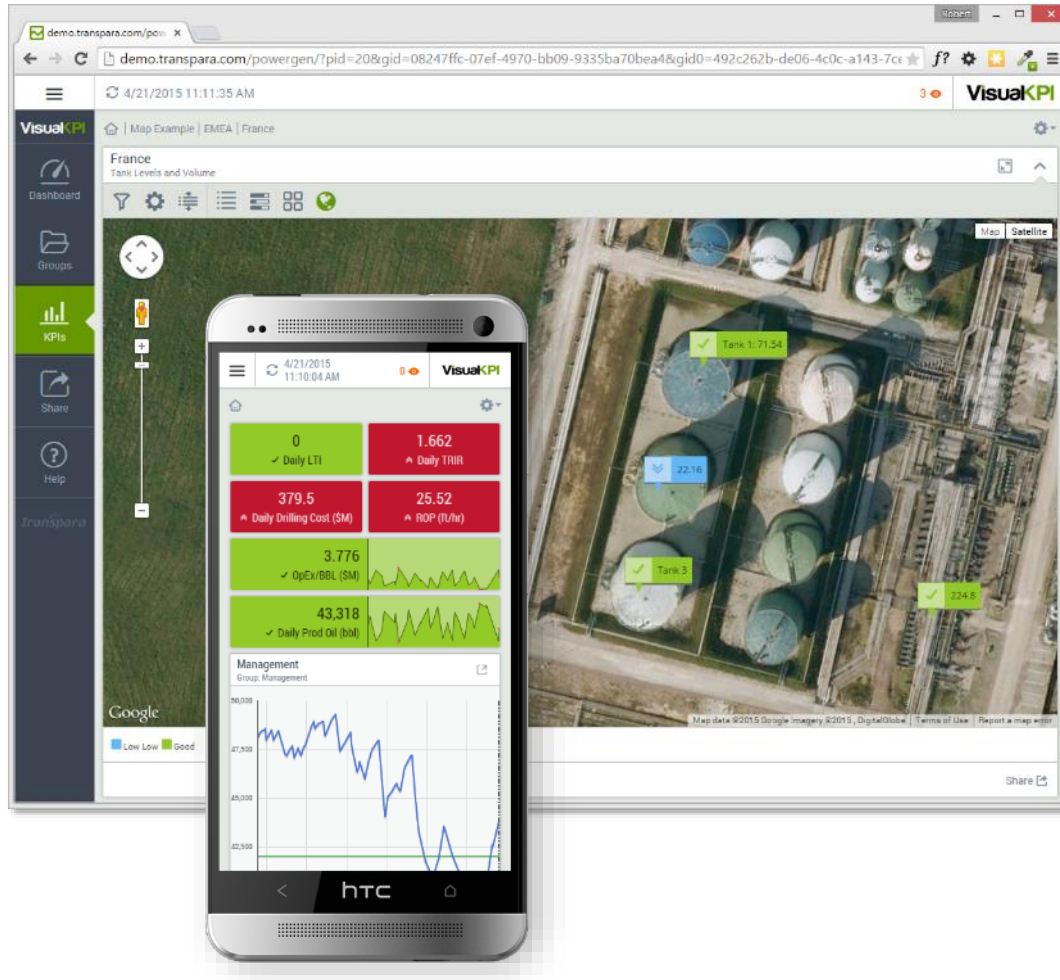
- Real-time crisis management / situational awareness
- Faster decisions / agility
- Increased production availability and asset uptime
- Reduced waste, downtime
- Optimization of equipment, staff and capital assets
- Improved compliance
- Sustained behavioral changes and staff accountability

Example scenario (Alyeska Pipeline):

Benefit	Est. Annual Savings
Reduced diagnostic errors	\$350,000
Reduced time to decision	\$575,000
Reduced off-shift dispatches	\$225,000
Early detection of events	\$130,000
Subject matter expert remote access	\$250,000
Est. Annual Savings	\$1,530,000

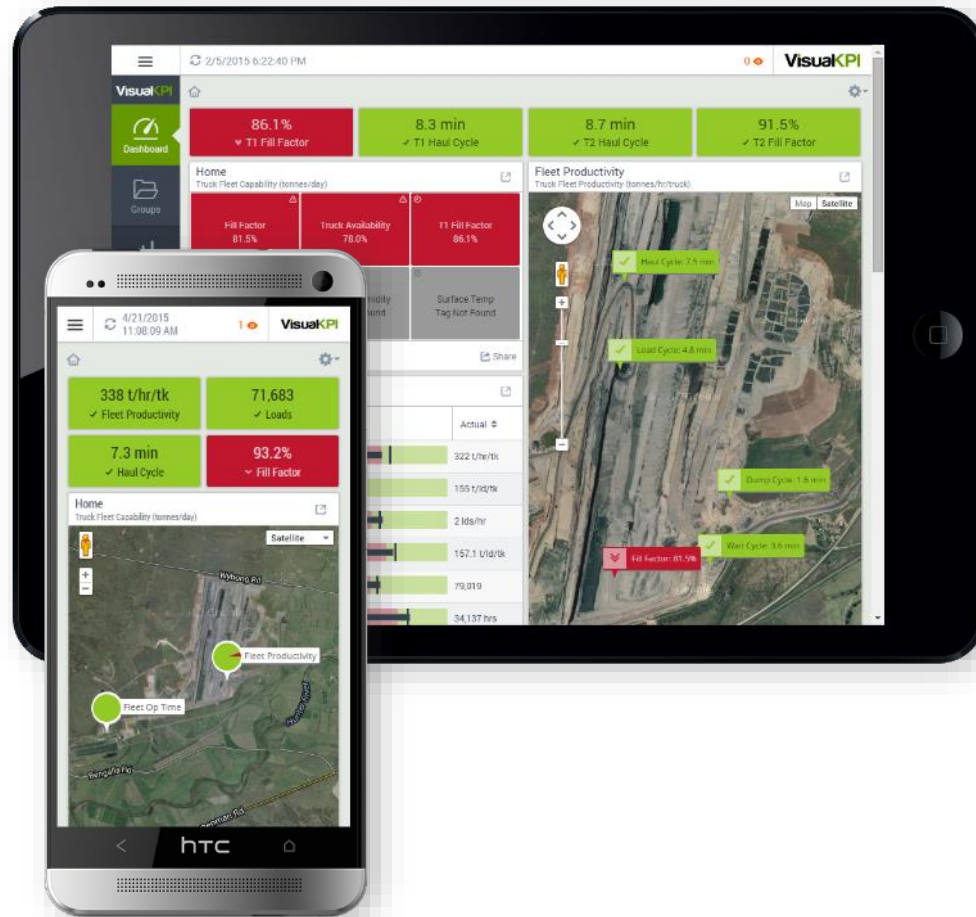


Visual KPI in Oil & Gas



- Used in upstream, midstream (Incl. pipeline) and downstream
- Crisis management / situational awareness
- Eliminate unplanned downtime
- Reduce waste & increase throughput
- Regulatory / environmental
- Equipment maintenance & OEE
- Optimize profits by aggregating real-time market and production metrics

Visual KPI in Mining



- Used in open pit, underground, material handling, concentrate and logistics
- Increased throughput
- Reduced waste & cycle times
- Staff performance monitoring
- Eliminate unplanned downtime
- Crisis management / situational awareness
- Regulatory / Environmental
- Equipment maintenance & OEE

Visual KPI in Telecommunications



- Ideal for network operations, OSS, satellite, wireless, mobile and more
- Brings disparate systems together in real-time
- Downtime management and real-time cause analysis
- Equipment health / OEE (e.g. backup batteries)
- Crisis management / situational awareness
- External forces monitoring and correlation (weather, fire, power)



VisualKPI



Dashboard



Groups



KPIs



Trends



Tables



Share



Search



Help

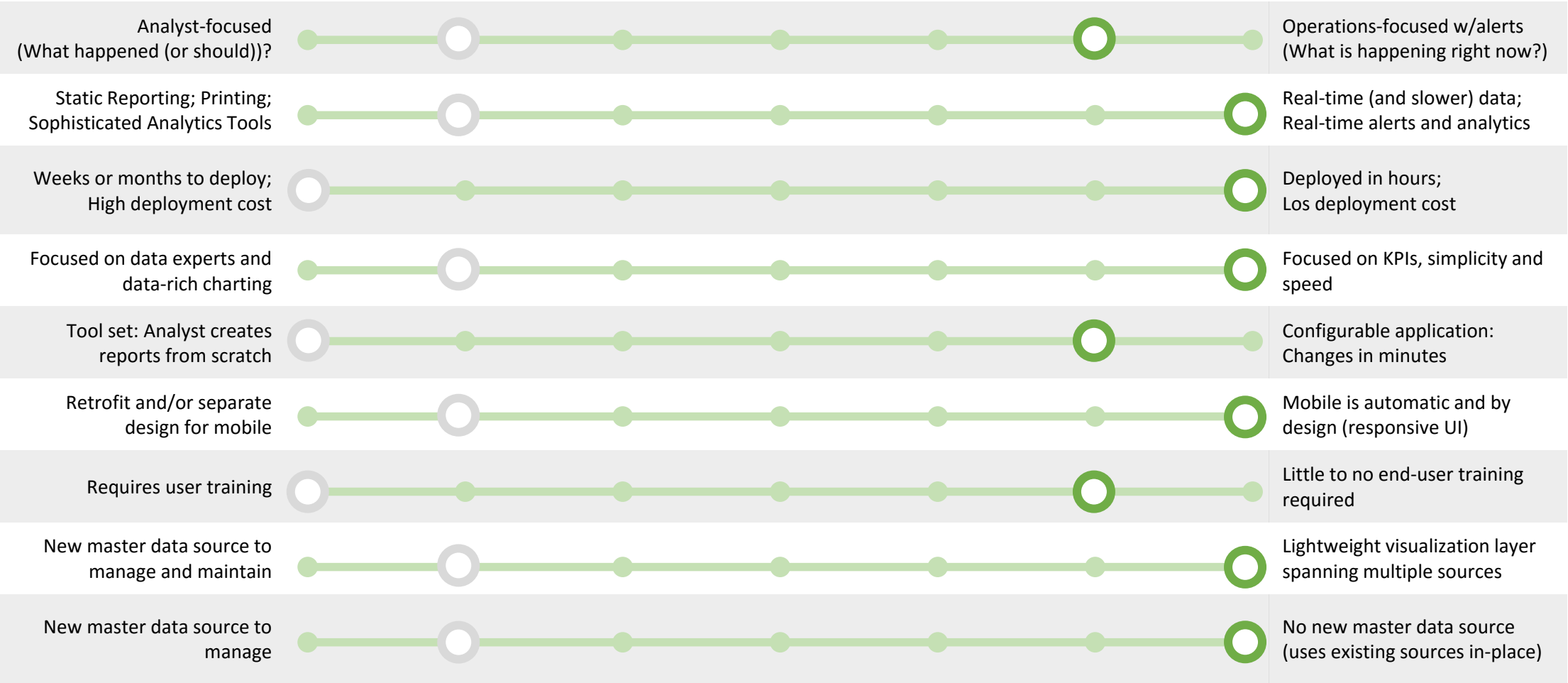
Transpara

Live Demo

VisualKPI

Why Visual KPI is Unique

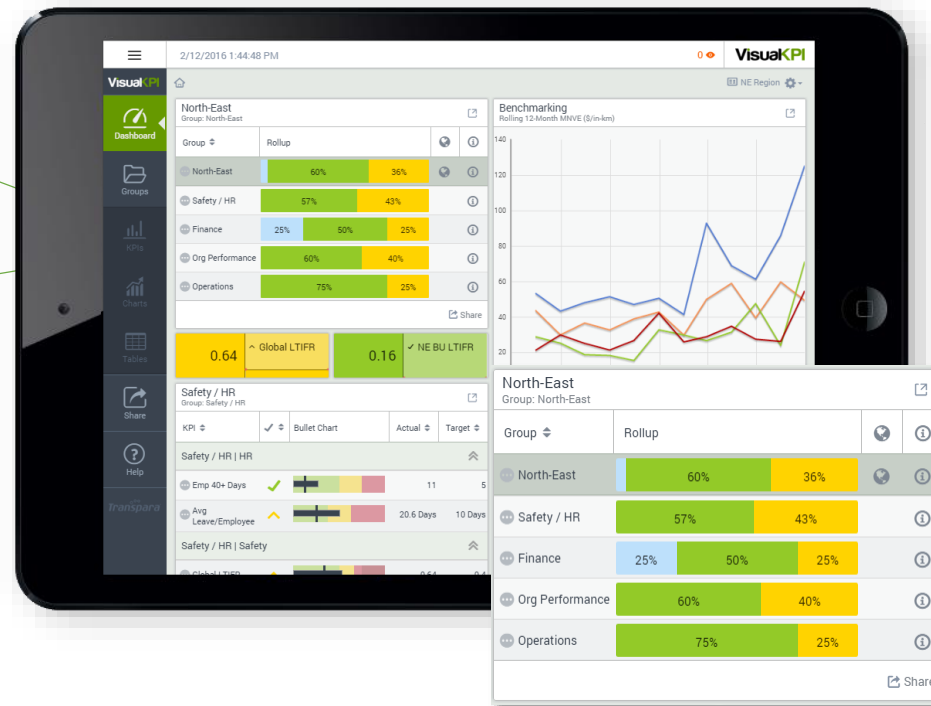
...and not a competitor to traditional BI tools (ideally, your company should have both)



- [illegible]



Every role has the relevant metrics to their job, with personalized dashboards and data that spans multiple sources. All are updated in real-time and on any device. Object-level security shows user only the metrics they have the right to see.

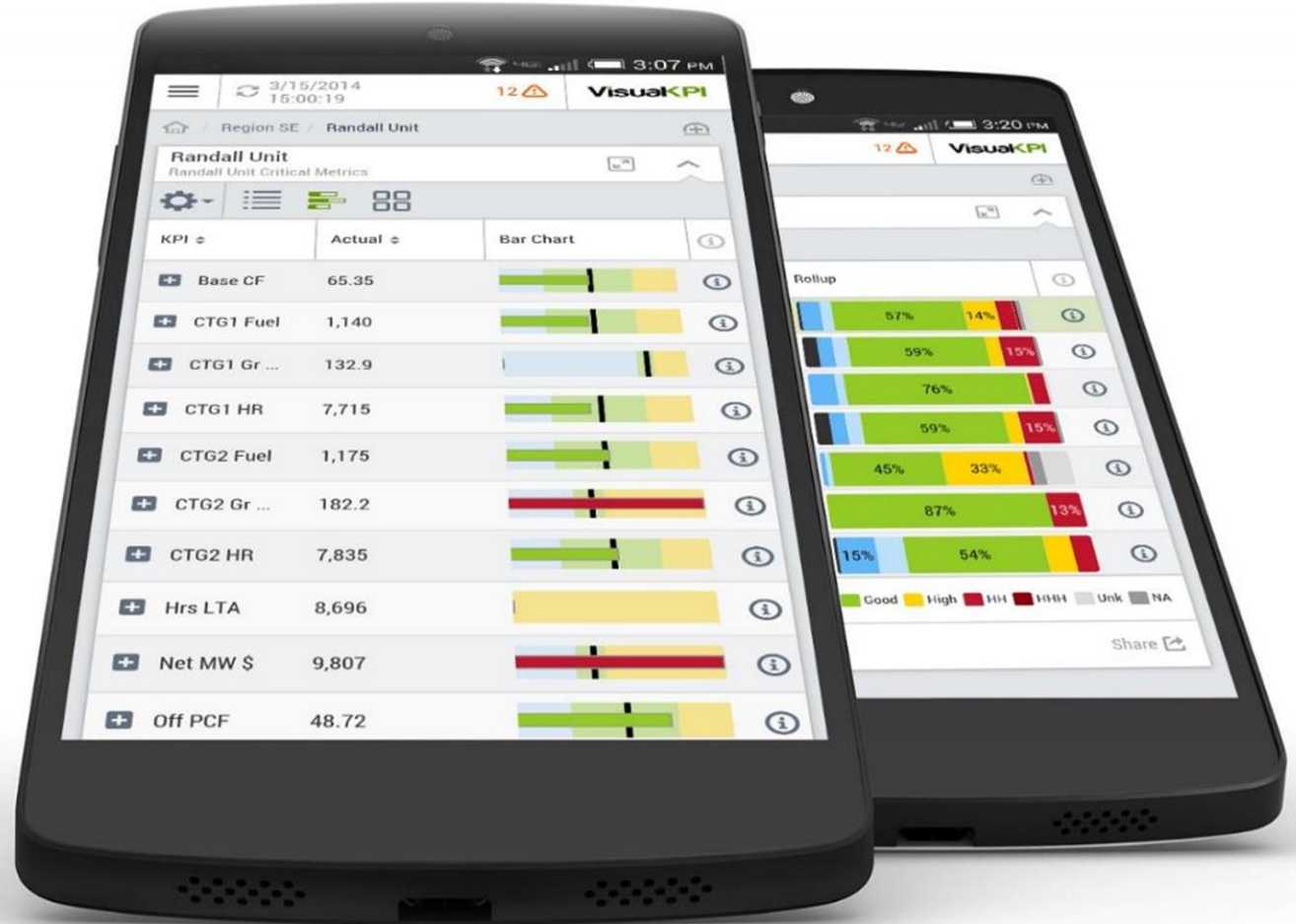


- Safety
- Financial Performance
- Organizational Utilization
- Operational Performance
- Planning

Every role and/or individual has the relevant metrics to their job, with personalized dashboards, watch lists and the ability to drill up or down. Data is real time and can span many data sources simultaneously.

Continuous Improvement with Data

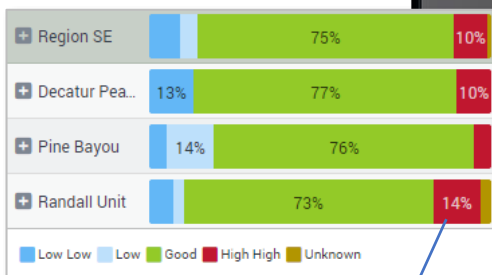
- Adjust & Improve
1. Aggregate
 2. Simplify
 3. Visualize
 4. Personalize
 5. Share
 6. Alert
 7. Act



Product Tour

Simple navigation & breadcrumbs so you are never lost

Personalized drag-n-drop dashboards and role-based security let users see only their metrics, organized and filtered how they prefer. Automatically adjusts to any screen size or device



Mobile-optimized rollup bars let you summarize and compare tens or thousands of KPIs at-a-glance to immediately find problems

By turning raw data into KPIs, real-time performance becomes obvious, even to untrained eyes

No need to refresh... It's alive! Watch the screen update as your data sources do. Great on a phone, tablet, PC, and even the big screen in the control room or board room.

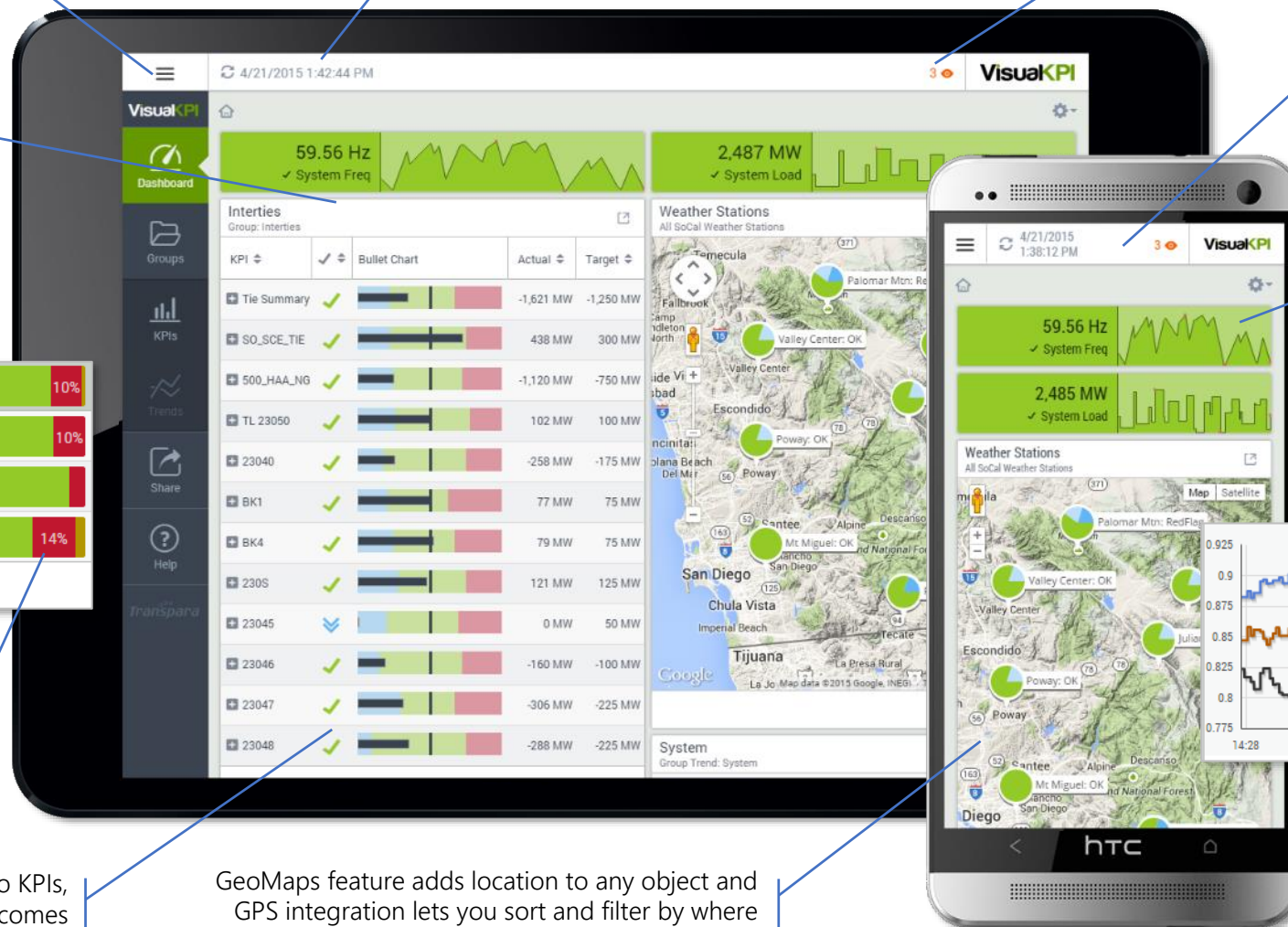
Personalized watch list
tracks the status of your
favorite KPIs

User experience designed for mobile first, with optimized visualizations that let you see and compare metrics easily on a small or large screens.

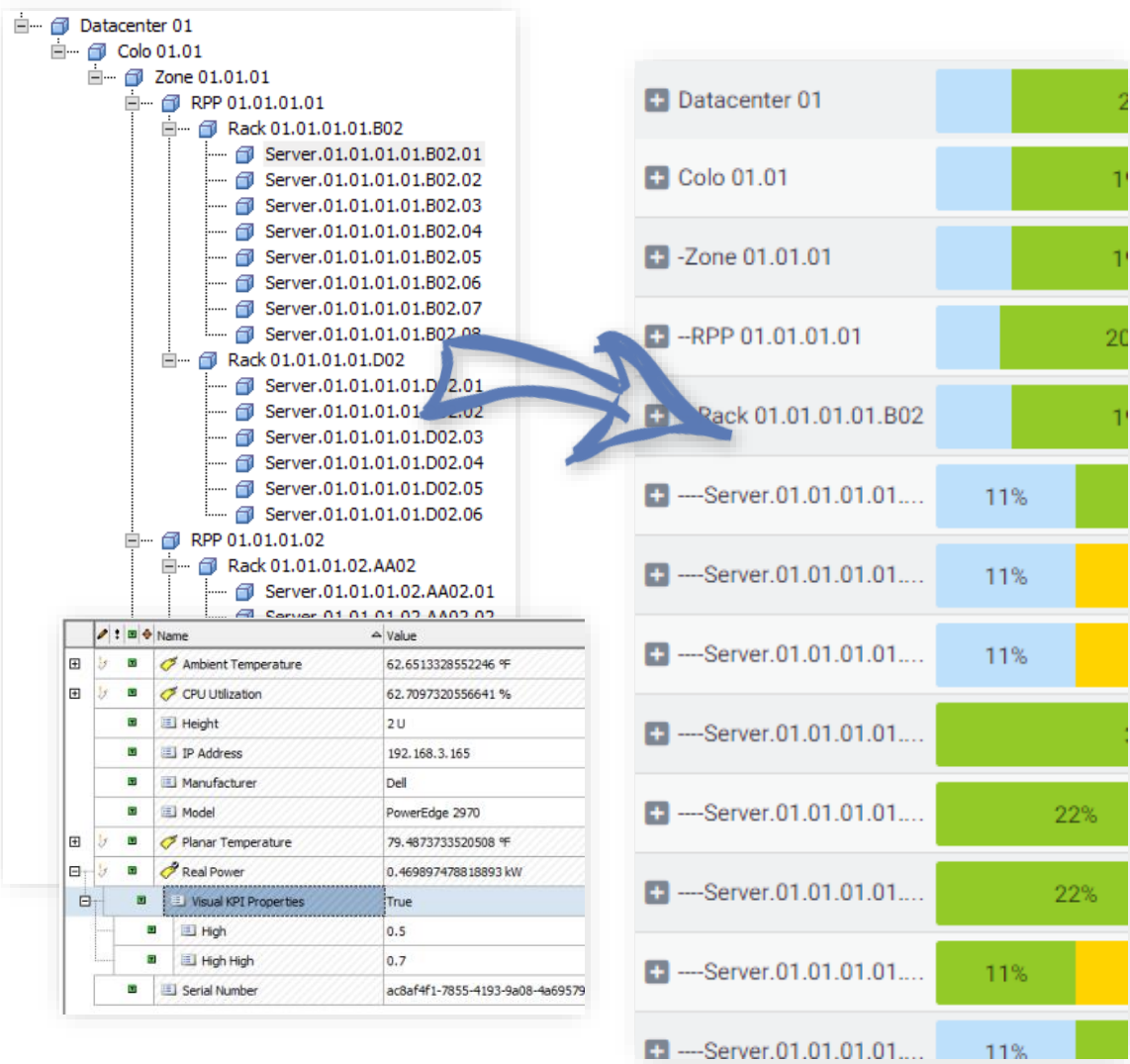
Choose your favorite visualizations: Scorecards, single KPIs, animated KPI maps, trends, bullet charts, bar charts, KPI roll-ups, GeoMaps, Group Map, pareto, XY plot, tables and more. Add them to your dashboard from any device

GeoMaps feature adds location to any object and GPS integration lets you sort and filter by where you are standing. Supports moving objects too!

- Real-time trends (single KPI, ad-hoc and multi-pen) with cursors, multi-scale, automatic down sampling and support for future data

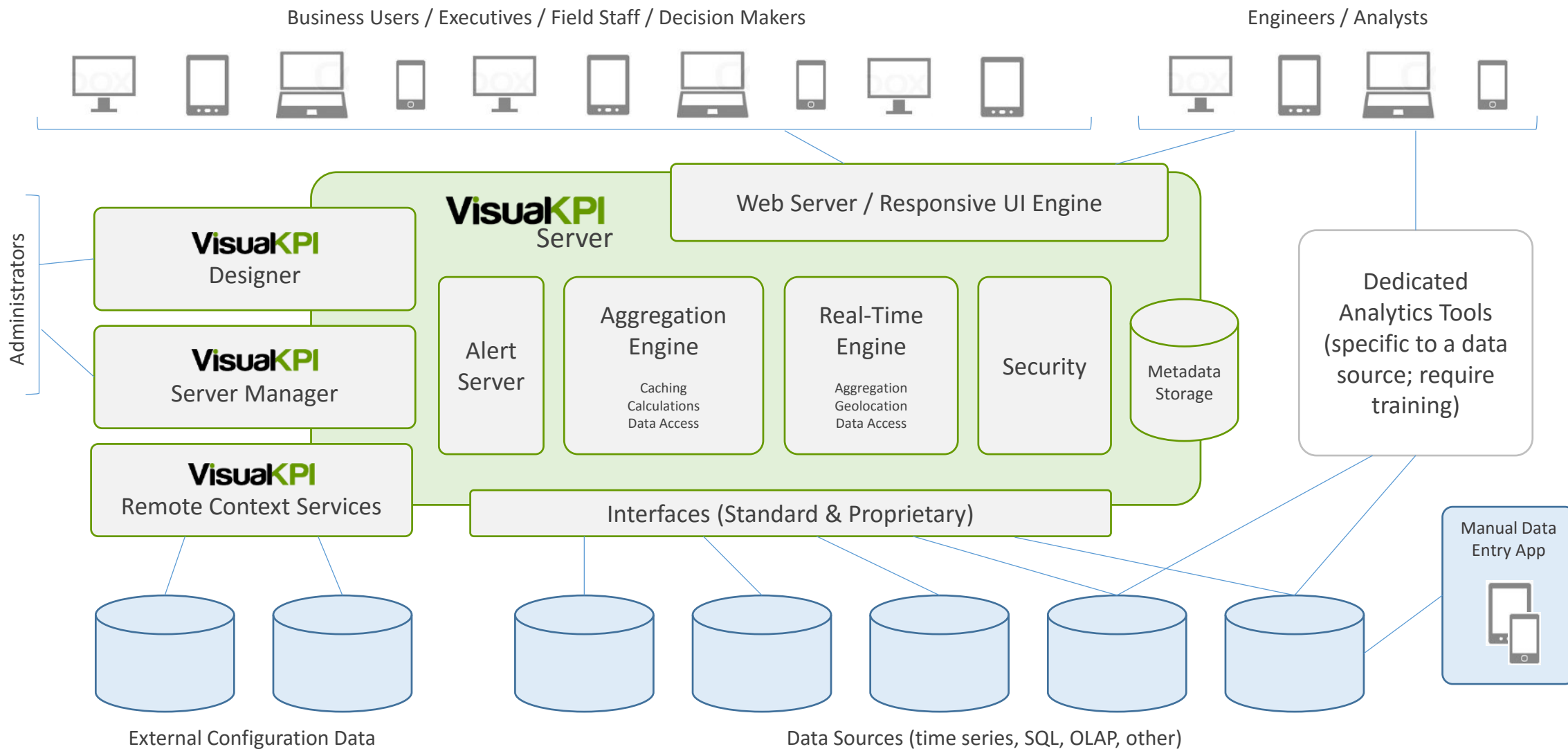


External Configuration Data (Visual KPI Integration Server)



- Read metadata from external sources:
 - Groups & Hierarchy
 - KPIs, including targets, limits
 - Geolocation
 - Security information
- Hands-off approach with zero cost to maintain and no manual data entry
- Supports rapidly changing or large amounts of configuration data
- On-time or ongoing live connection
- Support for almost any source:
 - Commercial software (e.g. OSIsoft PI AF)
 - Custom applications
 - Cloud infrastructure (e.g. Amazon AWS)

Product Architecture

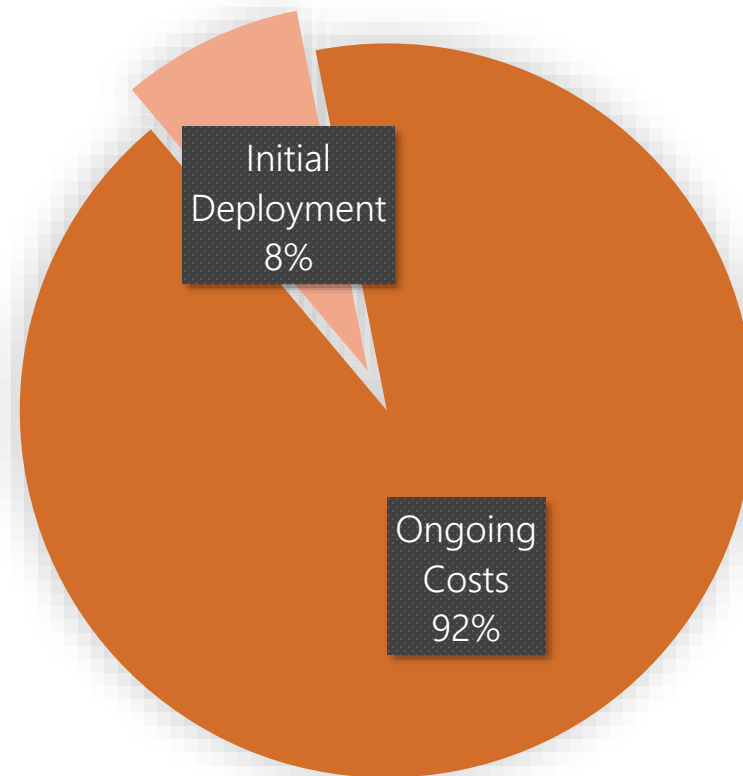




Velocity & TCO

- Gartner estimates that 92% of the money customers spend on analytics software is spent after the initial deployment, on such items as staffing, integrations and maintenance
- Visual KPI is an application, not a set of tools that require you to do the hard work
 - Deployed in a single day
 - Changes take minutes
 - Almost no ongoing costs

Traditional BI / Analytics Deployment




Exceptional Support

- Transpara supports enterprise customers around the world via phone, email and web conferencing
- All licenses include deployment and basic configuration/training via the web at no additional cost
- Transpara support is well versed in complex and highly secure IT environments
- Visual KPI was designed to be a low maintenance application that does not require dedicated staff to operate or maintain
- Customer reviews:
<http://transpara.com/mobile-bi-software-reviews/>



Case study: Alyeska Pipeline Company (USA)

Consortium snapshot



- The 800-mile-long Trans Alaska Pipeline System (TAPS), 5 pump stations, marine terminal, Logistics & operations centers
- \$150 million per day in oil
- Since 1977, TAPS has transported over 16B barrels of oil & loaded 19K tankers
- 800 people are employed by TAPS
- TAPS owners & percentages: BP 48.5%, ConocoPhillips 29%, ExxonMobil 21%, Unocal 1.5%

Pipeline Reliability

Alyeska pipeline

April 2015 Reliability Factor

Reliability Factor for Apr 2015

100%

Reliability Factor for year 2015

100%

How they use Visual KPI

- Performance monitoring: extension of the ‘control room’ and minimise risk of critical equipment failures
- Real-time crisis management / situational awareness
- Increasing production & throughput.
- Optimization of equipment, staff and capital assets

Value created (annual)	
Reduced diagnostic errors	\$350K
Reduced time to decision	\$575K
Reduced off-shift dispatches	\$225K
Early detection of events	\$130K
<u>Subject matter expert remote access</u>	<u>\$250K</u>
Annual Total Value Created	\$1.53M

‘It saves hundreds of wasted trips and calling staff off-shift (overtime, double-time)’

Daryl Hammond, Maintenance Program Lead

20

Case study: Freeport McMoRan, New Mexico (USA)*

Tyrone mine snapshot



- Chino/Tyrone Mine is an open-pit copper mining complex located in New Mexico, close to Silver City.
- Processing facilities consist of a solution extraction/electrowinning operation with a capacity of approx. 100m pounds of copper per year.
- Production in 2012 was 85 millions pounds of copper, valued at approx. US \$250 m
- Ownership 100% Freeport McMoRan



How they use Visual KPI

- VKPI widely used in the concentrator at a copper, gold and silver plant. Heavily relied upon by maintenance and operation for monitoring “all things that matter” by 150 people
- Growing application all the time, people want to add things: maintenance people track performance of equipment constantly – keeping track of their uptime: **“Ops can not live without it”**
- VKPI Started at the top level, but “has grown all the way down to people that aren’t totally computer literate”: Using ~700 KPIs

Value created

- Engineering and maintenance reduce equipment unscheduled downtime and improve OEE for critical machinery
- Faster and more accurate decision making when operational problems are encountered, including input from off-site subject matter experts
- Optimised chemical processes by real time management of supply tanks
- Critical information at your fingertips on the mobile device

“Visual KPI is a great product I will recommend to any type of industry. In fact, Transpara team has proven themselves to be both open and able to expand their product to meet their customers needs. They are always few minutes away from reply to emails a phone call away. Mostly, they always have a positive answer to questions” - **Danny Muteb, Operations Freeport McMoRan**

*In addition to Tyrone Mine, Transpara Visual KPI solution is used also by the following Freeport McMoRan mines: Green Valley, AZ; Chino / Tyrone Mining, NM; Morenci, AZ; Miami/Claypool, AZ

Case study: Devon Energy Corporation (USA, Canada)

Company snapshot



- Devon Energy Corporation is among the largest U.S.-based independent natural gas and oil producers
- Focused on North American onshore exploration and production
- Devon is one of North America's larger processors of natural gas liquids and owns natural gas pipelines and treatment facilities in many of the company's producing areas
- Fortune 500 (USA)
- Revenue US\$ 10,397.0 million (2013)
- Operating income \$621 m
- 5,900 employee



How they use Visual KPI

- 50,000 individual monitored points for 1,000 field assets
- Broad deployment for field asset monitoring
- Deployment in both USA and Canada
- Monitoring gas production wells

Value created

- Prevention of failure of critical infrastructure
- Improvement of maintenance model for geographically dispersed monitored plants and wells
- Improved access to subject matter experts 24x7, beyond hours when the plants are manned

Case study: Newmont Yanacocha

Yanacocha snapshot



- Largest gold mine in South America, located in northern Peru
- The operation is a joint venture between Newmont (51%), Minas Buenaventura (43.5%) and the IFC
- Produced \$7b of gold to date
- In 2014, Yanacocha produced 3 million ounces of gold

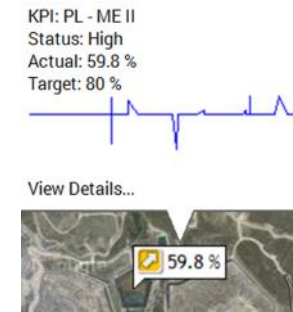


How they use Visual KPI

- Water management – with strong focus on compliance and efficient water use in terms of catchment, treatment and discharge (volumes in tens of millions of cubic metres p.a.)
- Environmental monitoring, Condition Based Maintenance (equipment), water use planning, monitoring water distribution for mineral processing and water treatment

Value created

- Proactive management of potential environmental problems – act before too late: Water quality control is performed 24x7 at all control points in order to prevent environmental damage by discharge of untreated or environmentally damaging water
- Subject matter experts and all relevant personnel access monitoring data to optimize process control from any location or device.



Case study: Rio Tinto Kennecott, Utah (USA)

Kennecott snapshot



- Largest open pit copper mine in the world. Supplies nearly one quarter of US copper needs. Kennecott operation comprises mining, concentrating, smelting and refining
- Producing 300 kt of copper, 400k oz of gold and 4m oz of silver; 30m lb of molybdenum. Cumulative production of copper to date in excess of 19m tonnes
- Annual copper production ~205 kt valued at US\$1.27b
- Kennecott is wholly owned by Rio Tinto corporation

RioTinto

Kennecott Utah Copper

How they use Visual KPI

- For shutdown management at Copperton Concentrator
- Provision of real time performance feedback required for scheduling & coordination of major plant outages and regular scheduled maintenance outages for SAG & Ball Mills
- Tracking and reporting of actual versus budget costs related to each Maintenance outage

Value created

- Cost reduction by reducing unscheduled downtime events
- Increase uptime for critical equipment

"The addition of Visual KPI to our facility has improved the awareness of the operational status of critical equipment. On multiple occasions it has provided our facility with immediate feedback on operational issues. This immediate feedback expedites our response to the problems and reduces unplanned downtime."

Nathan Maughan, Shutdown Manager, Kennecott

Case study: PEMEX (Petróleos Mexicanos, Mexico)

Company snapshot



- The Mexican state-owned petroleum company
- Total asset worth of \$415.75 B
- Vertically integrated oil& gas producer, refiner and marketer of products
- Revenue \$129 B
- Net income \$ 390 M
- 138,000 employees



How they use Visual KPI

- Pemex uses Visual KPI in production at **280 plants** (of their 350 plants total), and they “use it a lot!”
- The primary use is in the Refining division, Gas and Gas Pipelines, Petrochemicals and in the upstream area, monitoring
 - Process variables
 - Equipment variables
 - Quality variables
- PEMEX monitors thousands of KPIs across all of Mexico

Value created

- Key benefits realized in 6 areas:
 1. Reduction in downtime (approx. ~50% of their savings)
 2. Increase in operating life of equipment
 3. Optimization of energy use
 4. Reduction in maintenance cost
 5. Reduction in production failures
 6. Increase in environmental safety
- Savings of “tens of millions of dollars”, tracked in real time directly against baseline in detail

"We are in love with this software. When we were sitting with the Designer for first time, I had my team organize the tags and within 10 minutes we had them ready to present to the users. They couldn't believe that what they wanted to do for two years was achieved in 10 min. They were impressed with the speed and ease that allows you to design and configure the data in the Designer with AF."

--Carlos Guevara, Head of Industrial Applications, Pemex

Case study: Tesoro Corporation (USA)

Company snapshot



- Tesoro Corporation is a Fortune 100 company headquartered in Texas
- Operating six refineries in the Western USA & crude oil capacity of approx. 845K barrels (134,300 m3) per day
- Retail-marketer including over 2,264 branded retail gas stations, operated the Tesoro, Shell, Exxon, Mobil, ARCO, and USA Gasoline brands.
- Annual revenues of \$37 billion
- Operating income US\$750 (FY13)
- 5,700 employees.



How they use Visual KPI

- Uses Visual KPI used in the refining process
- Monitoring
 - Process variables
 - Equipment variables
 - Quality variables

Value created

- Prevention of failure of critical infrastructure
- Supporting predictive maintenance model by reduction of unplanned shutdowns and equipment downtime
- Improved access to subject matter experts 24x7, beyond hours when the plants are manned



VisualKPI



Dashboard



Groups



KPIs



Trends



Tables



Share



Search



Help

Transpara



VisualKPI

<http://v5.transpara.com>


TransparaTM
NOW YOU KNOW.